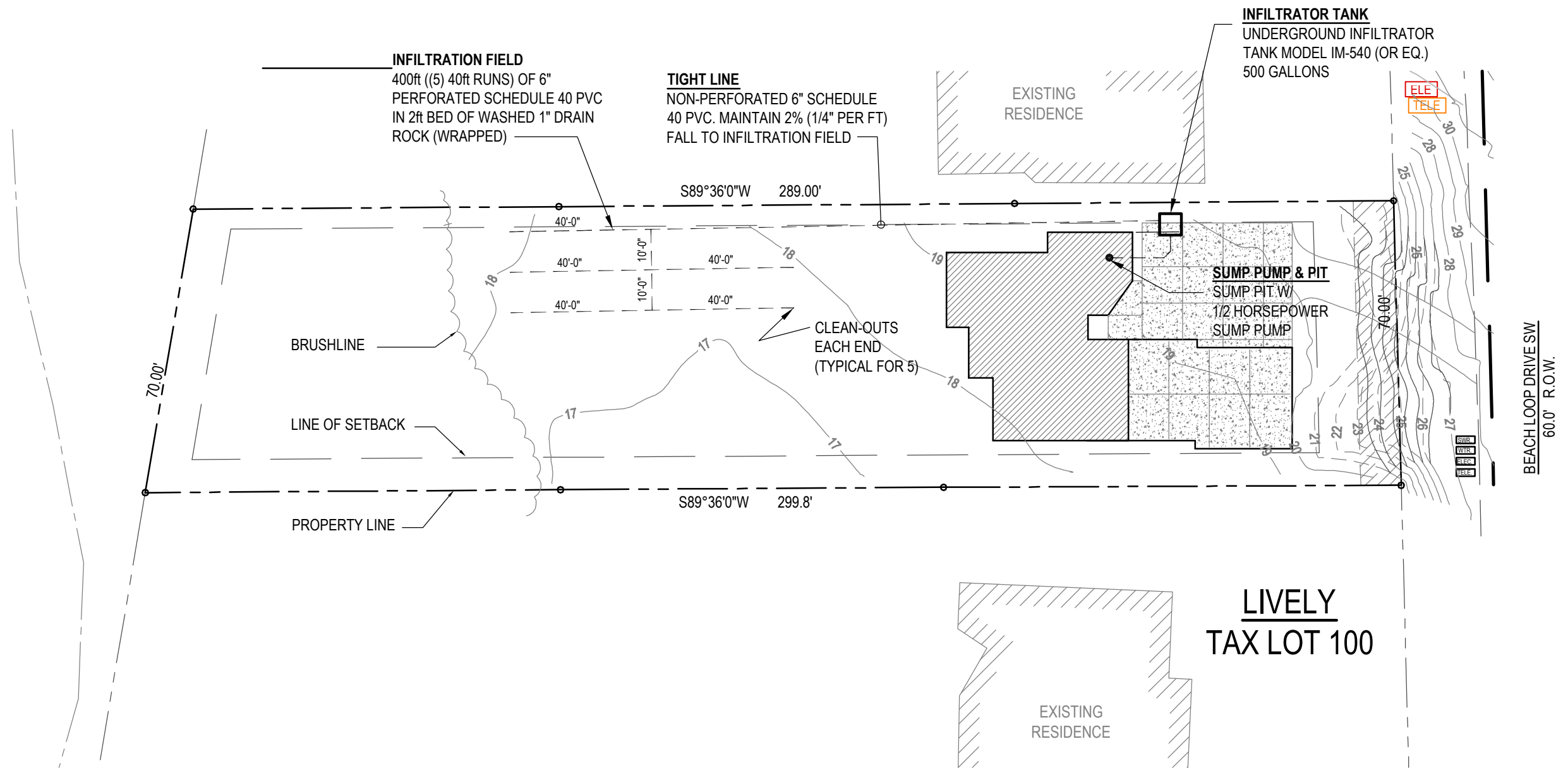


COAN RESIDENCE
 29S15W01BB #2000
 BANDON OR. 97411



SITE/ INFILTRATION PLAN

SCALE : 1"=30'-0"



ONSITE INFILTRATION SYSTEM - NARRATIVE

The infiltration system will consist of an underground infiltrator tank (IM-540 TANK or comparable) which will be 500 gallons and will be placed in the northeast corner of the lot (location to be determined). Connected to the tank will be all surface, and near surface, drain outfalls including rain gutter outfalls. A four-foot diameter perforated HDPE sump pump collar will be installed in the lowest area of the crawl space under the house. The collar will be installed in a 2.0 deep pit with 6 inches of 1- inch washed drain rock at the bottom. Installed in the collar will be a 1/2 hp electric sump pump with a low-profile float switch. The sump pump will discharge through a PVC pipe into the tank. The tank will outfall by gravity flow into a tight line consisting of a non-perforated 6-inch sch 40 PVC which will maintain 2% (1/4 inch per foot) fall. The tight line will flow east to west parallel to the northern property boundary to an infiltration field consisting of 200 feet of 6- inch perforated sch 40 PVC in a 2-foot deep excavated bed of washed 1-inch drain rock (wrapped). Clean-outs at all bends will be installed.

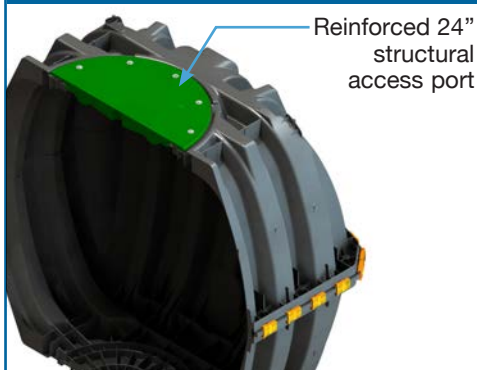


The Infiltrator IM-540 is a lightweight strong and durable septic/pump tank. This watertight tank design is offered with Infiltrator's line of custom-fit risers and heavy-duty lids. Infiltrator injection molded tanks provide a revolutionary improvement in plastic tank design, offering long-term exceptional strength and watertightness.

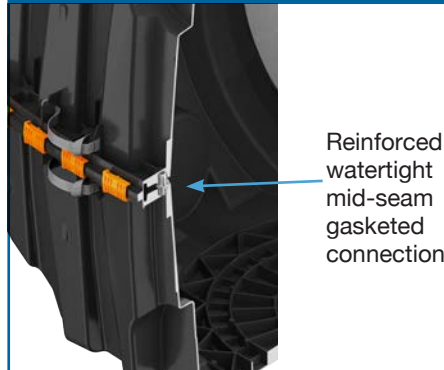
Features & Benefits

- Strong injection molded polypropylene construction
- Lightweight plastic construction and inboard lifting lugs allow for easy delivery and handling
- Integral heavy-duty green lids that interconnect with TW™ risers and pipe riser solutions
- Structurally reinforced access ports eliminate distortion during installation and pump-outs
- Reinforced structural ribbing offers additional strength
- Can be installed with 6" to 48" of cover
- Can be pumped dry during pump-outs
- Suitable for use as a pump tank or rainwater (non-potable) tank
- No special installation, backfill or water filling procedures are required
- No special water filling requirements are necessary
- The tank may be backfilled with suitable native soil. See installation instructions for guidance.

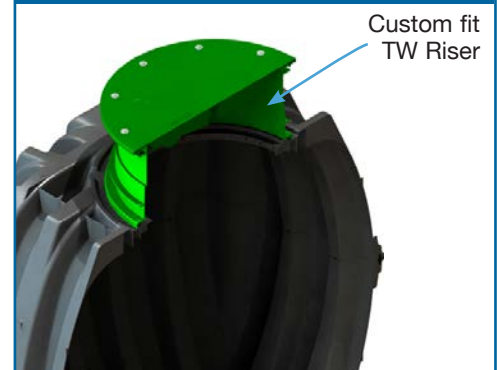
TANK CUTAWAY



MID-SEAM CUTAWAY



RISER CUTAWAY



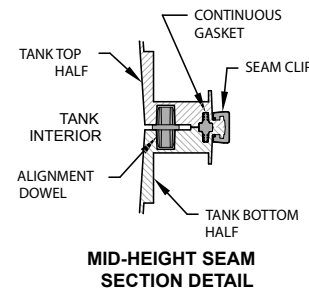
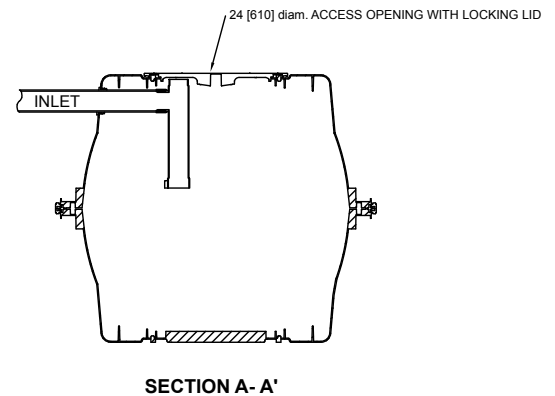
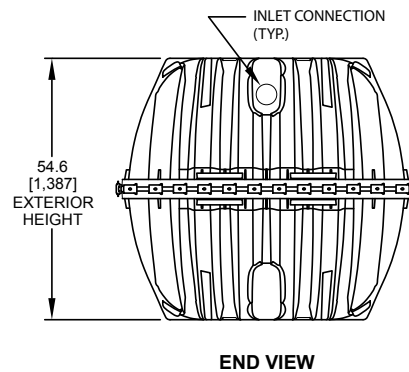
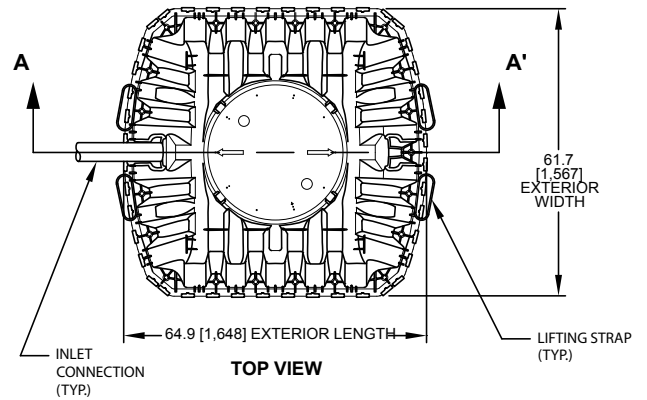
IM-540 General Specifications and Illustrations

The IM-540 is an injection molded two piece mid-seam plastic tank. The IM-540 injection molded plastic design allows for a mid-seam joint that has precise dimensions for accepting an engineered EPDM gasket. Infiltrator's gasket design utilizes technology from the water industry to deliver proven means of maintaining a watertight seal. The two-piece design is permanently fastened using a series of non-corrosive plastic alignment dowels and locking seam clips. The IM-540 is assembled and sold through a network of certified Infiltrator distributors.

Must be backfilled and installed in accordance with Infiltrator Water Technologies, Infiltrator IM-Series Septic Tank General Installation Instructions and for shallow ground water conditions reference the Infiltrator IM-Series Tank Buoyancy Control Guidance.

Please visit www.infiltratorwater.com/images/pdf/ManualsGuides/TANK01.pdf for the latest information.

IM-540	
Total Capacity	552 gal (2090 L)
Length	64.9" (1648 mm)
Width	61.7" (1567 mm)
Height	54.6" (1387 mm)
Maximum Burial Depth	48" (1219 mm)
Minimum Burial Depth	6" (152 mm)
Maximum Pipe Diameter	4" (100 mm)
Weight	169 lbs (77 kg)



4 Business Park Road
 P.O. Box 768
 Old Saybrook, CT 06475
 860-577-7000 • Fax 860-577-7001
1-800-221-4436
www.infiltratorwater.com

U.S. Patents: 4,759,661; 5,017,041; 5,156,488; 5,336,017; 5,401,116; 5,401,459; 5,511,903; 5,716,163; 5,588,778; 5,839,844 Canadian Patents: 1,329,959; 2,004,564 Other patents pending. Infiltrator, Equalizer, Quick4, and SideWinder are registered trademarks of Infiltrator Water Technologies. Infiltrator is a registered trademark in France. Infiltrator Water Technologies is a registered trademark in Mexico. Contour, MicroLeaching, PolyTuff, ChamberSpacer, MultiPort, PosiLock, QuickCut, QuickPlay, SnapLock and StraightLock are trademarks of Infiltrator Water Technologies. PolyLok is a trademark of PolyLok, Inc. TUF-TITE is a registered trademark of TUF-TITE, INC. Ultra-Rib is a trademark of IPEX Inc.

© 2013 Infiltrator Water Technologies, LLC. All rights reserved. Printed in U.S.A.

IM11 1116

Contact Infiltrator Water Technologies' Technical Services Department for assistance at 1-800-221-4436