

CONSTRUCTION NOTES:

- CONTRACTOR SHALL POTHOLE AND VERIFY EXACT LOCATION OF UTILITY PRIOR TO THE CONSTRUCTION OF ANY IMPROVEMENTS. CONTRACTOR SHALL NOTIFY ENGINEER OF ANY CONFLICTS FOUND IN THE FIELD
- CONSTRUCT TYPICAL UTILITY TRENCH EXCAVATION AND BACKFILL AS PER DETAIL 1, SHEET C6.5
- CONSTRUCT TYPICAL SEWER TRENCH PER DETAIL 2, SHEET C6.5
- CONNECT TO EXISTING SANITARY SEWER MAIN, CONTRACTOR TO VERIFY CONDITION & LOCATION OF MAIN BEFORE CONNECTION
- CONSTRUCT 6" SDR 35 SANITARY SEWER LATERAL AS PER DETAIL 3, SHEET C6.5, LENGTH AND SLOPE AS SHOWN ON PLANS
- CONSTRUCT SANITARY SEWER CLEAN OUT AS PER DETAIL 4, SHEET C6.5
- FOR INTERNAL CONTINUATION OF SANITARY SEWER, SEE PLUMBING PLANS
- INSTALL 6" FIRE SERVICE CONNECTION AS PER DETAIL 1, SHEET C6.6
- INSTALL 6" C900 PVC FIRE WATER PIPE, LENGTH AS SHOWN ON PLANS
- INSTALL 6" GATE VALVE AS PER DETAIL 5, SHEET C6.6

GENERAL UTILITY NOTES:

- CONTRACTOR SHALL BE RESPONSIBLE FOR PROVIDING AND INSTALLING ALL ACCESSORIES AS NEEDED TO CONNECT TO EXISTING SEWER LINE AT NO ADDITIONAL EXPENSE TO THE OWNER. CONTRACTOR SHALL POTHOLE EXISTING SEWER MAIN AND VERIFY DEPTH AND LOCATION PRIOR TO CONSTRUCTION.
- CONTRACTOR SHALL PROVIDE ALL ACCESSORIES NEEDED FOR, AND SHALL COORDINATE DIRECTLY WITH CITY OF BANDON FOR CONNECTION TO EXISTING WATER.
- ALL SANITARY SERVICE LINES SHALL BE INSTALLED AT A MINIMUM SLOPE OF 2% PER THE UBC UNDER THE BUILDING SLAB.
- CONTRACTOR SHALL PROTECT ALL SEWER/STORM/WATER CROSSING PER AWWA STANDARDS.
- SEE BUILDING PLANS FOR CONTINUATION OF UTILITY LINES INTO BUILDING.
- POWER AND PHONE DESIGN BY OTHERS. DESIGN WILL BE PROVIDED TO CONTRACTOR ONCE COMPLETED.
- WORK AND MATERIALS SHALL CONFORM TO THE MOST RECENT ODOT/APWA CONSTRUCTION STANDARDS, UNLESS OTHERWISE COVERED BY THE SPECIFICATION OF THE CITY OF BANDON
- ALL REFERENCE TO PROJECT ENGINEER MEANS: MATTHEW K. RASMUSSEN, P.E.
- EVERY REASONABLE EFFORT HAS BEEN MADE TO LOCATE THE EXISTING UTILITIES ON THE PLANS, BUT NO GUARANTEE IS MADE AS TO THE COMPLETENESS OR ACCURACY OF THESE LOCATIONS. IT SHALL BE THE CONTRACTOR'S RESPONSIBILITY TO LOCATE THESE AND OTHER EXISTING UTILITIES AND STRUCTURES IN THE FIELD.
- THE CONTRACTOR SHALL NOTIFY THE FOLLOWING 48 HOURS IN ADVANCE OF ANY WORK:
CITY OF BANDON PUBLIC WORKS: (541) 347-2437
OREGON UTILITIES COORDINATING COUNCIL: 811
- ALL WATERLINE WORK, INCLUDING INSTALLATION, EXCAVATION, AND COMPACTION SHALL FOLLOW THE RECOMMENDATIONS OF THE ENGINEER, AS INDICATED ON THESE PLANS AND AS DIRECTED BY THE ENGINEER IN THE FIELD.
- ALL BACKFILL MATERIAL SHALL BE OBTAINED FROM A SOURCE APPROVED BY THE CITY OF BANDON PUBLIC WORKS DEPARTMENT. MATERIAL SOURCE SHALL NOT VARY THROUGHOUT THE JOB CONSTRUCTION.
- CLASS "B" BACKFILL MATERIAL SLURRY SHALL BE 3/4" - 0 CRUSHED ROCK PER ODOT/APWA STANDARD SPECIFICATION FOR ALL AREAS UNDER PAVEMENT OR IN RIGHT OF WAY. BACKFILL MATERIAL SHALL BE PLACED IN A MAXIMUM LIFTS OF 6" (SIX INCHES) AND SHALL BE COMPACTED BY MECHANICAL MEANS TO 95% OF MAXIMUM DRY DENSITY IN ACCORDANCE WITH ASTM D-698 FOR THE DETERMINATION OF 100% RELATIVE MAXIMUM DENSITY OF GRANULAR MATERIALS.
- CLASS "A" BACKFILL MATERIAL SHALL BE APPROVED NATIVE MATERIAL FOR ALL AREAS OUTSIDE OF THE PAVED AREAS. BACKFILL MATERIAL SHALL BE PLACED IN MAXIMUM LIFTS OF 6" (SIX INCHES) AND SHALL BE COMPACTED BY MECHANICAL MEANS TO 95% OF MAXIMUM DRY DENSITY IN ACCORDANCE WITH ASTM D-698 FOR THE DETERMINATION OF 100% RELATIVE MAXIMUM DENSITY OF GRANULAR MATERIALS.
- PIPE BEDDING AND PIPE ZONE MATERIAL SHALL BE 3/4" - 0 CRUSHED ROCK. PIPE BEDDING AND PIPE ZONE MATERIAL SHALL BE PLACED IN MAXIMUM LIFTS OF 6" (SIX INCHES) AND SHALL BE COMPACTED BY MECHANICAL MEANS TO 95% OF MAXIMUM RELATIVE DENSITY AT OPTIMUM MOISTURE IN ACCORDANCE WITH AASHTO T-99 METHOD D, PROCEDURE FOR DETERMINATION OF 100% RELATIVE MAXIMUM DENSITY OF GRANULAR MATERIAL.
- ASPHALTIC CONCRETE (AC) PATCHES SHALL BE LEVEL 3 HMAC. MATERIALS, WORKMANSHIP AND INSTALLATION SHALL BE IN ACCORDANCE WITH APWA STANDARD SPECIFICATION AND CITY OF BANDON AND AT THE LOCATIONS INDICATED BY THE ENGINEER.
- ALL MATERIAL REMAINING AFTER BACKFILLING OPERATIONS HAVE BEEN COMPLETED SHALL BE DISPOSED OF BY THE CONTRACTOR, IN THE MANNER APPROVED AT THE LOCATION APPROVED BY THE ENGINEER OR LOCAL AUTHORITY.
- MINIMUM COVER OVER ALL WATER SUPPLY PIPELINES SHALL BE 36".
- ALL VALVES SHALL BE INSTALLED IN VALVE BOXES PER DETAIL.

- INSTALL 6" FLG X FLG 90° ELBOW WITH THRUST BLOCK AS PER DETAIL 6, SHEET C6.6
- INSTALL WALL MOUNTED POST INDICATOR VALVE. FOR DETAIL SEE FIRE SUPPRESSION PLANS
- INSTALL DCDA INTERNAL HORIZONTAL BACKFLOW PREVENTER. FOR DETAIL SEE FIRE SUPPRESSION PLANS
- FOR INTERNAL CONTINUATION OF FIRE SERVICE, SEE ARCHITECTURAL AND FIRE SPRINKLER PLANS
- INSTALL 1" DOMESTIC SERVICE CONNECTION AS PER DETAIL 1, SHEET C6.6
- INSTALL 1" DOMESTIC WATER METER AS PER DETAIL 6, SHEET C6.5
- INSTALL 1" DOMESTIC BACKFLOW PREVENTER AS PER DETAIL 7, SHEET C6.5
- INSTALL 1-1/2" HDPE DOMESTIC WATER SERVICE, LENGTH AS SHOWN ON PLANS
- FOR INTERNAL CONTINUATION OF DOMESTIC WATER, SEE PLUMBING PLANS
- CONSTRUCT 1" IRRIGATION SERVICE CONNECTION AS PER DETAIL 1, SHEET C6.6

- INSTALL 1" IRRIGATION WATER METER AS PER DETAIL 6, SHEET C6.5
- INSTALL 1" IRRIGATION BACKFLOW PREVENTER AS PER DETAIL 8, SHEET C6.5
- FOR CONTINUATION OF IRRIGATION SERVICE, SEE LANDSCAPE PLANS
- INSTALL 12" SDR 35 STORM DRAIN PIPE, LENGTH AND SLOPE AS SHOWN ON PLANS
- INSTALL TYPE 3R CATCH BASIN WITH "SUR TRAP" AS PER DETAIL 6, SHEET C6.6
- CONSTRUCT 48" STORM DRAIN MANHOLE AS PER DETAIL 3, SHEET C6.4
- CONSTRUCT LANDSCAPE DETENTION BASIN AS PER DETAIL 6, SHEET C6.4
- CONSTRUCT 18" SDR 35 STANDPIPE OUTLET STRUCTURE AS PER DETAIL 5, SHEET C6.4
- INSTALL FLARED END SECTION AND RIP RAP AS PER DETAILS 1 & 2, SHEET C6.7
- INSTALL PROPANE TANK & PAD, COORDINATE FINAL LOCATION & SIZE WITH LOCAL PURVEYOR

- RELOCATED POWER POLE, COORDINATE FINAL DESIGN, PLACEMENT AND CONNECTION WITH LOCAL POWER PURVEYOR
- INSTALL TRANSFORMER AND PAD, COORDINATE FINAL LOCATION & DESIGN WITH LOCAL POWER PURVEYOR
- (2) 4" CONDUIT FOR PRIMARY POWER, COORDINATE WITH LOCAL POWER PURVEYOR FOR FINAL SIZE, ROUTING, AND CONNECTION. CONTRACTOR TO PROVIDE TRENCHING AND INSTALLATION
- (2) 2" CONDUITS FOR PHONE/CABLE SERVICE, COORDINATE WITH LOCAL UTILITY PROVIDER FOR FINAL SIZE, ROUTING, AND CONNECTION. CONTRACTOR TO PROVIDE TRENCHING AND INSTALLATION
- INSTALL ELECTRICAL CONDUITS TO Pylon SIGN, SEE ELECTRICAL PLANS FOR DETAIL
- INSTALL SITE LIGHTING, COORDINATE LOCATION AND SIZE WITH LIGHTING PLANS. SEE STRUCTURAL PLANS FOR LIGHT POLE BASE
- INSTALL DCDA FOR FIRE LINE COORDINATE LOCATION & SIZE WITH LOCAL PURVEYOR

NOTES:

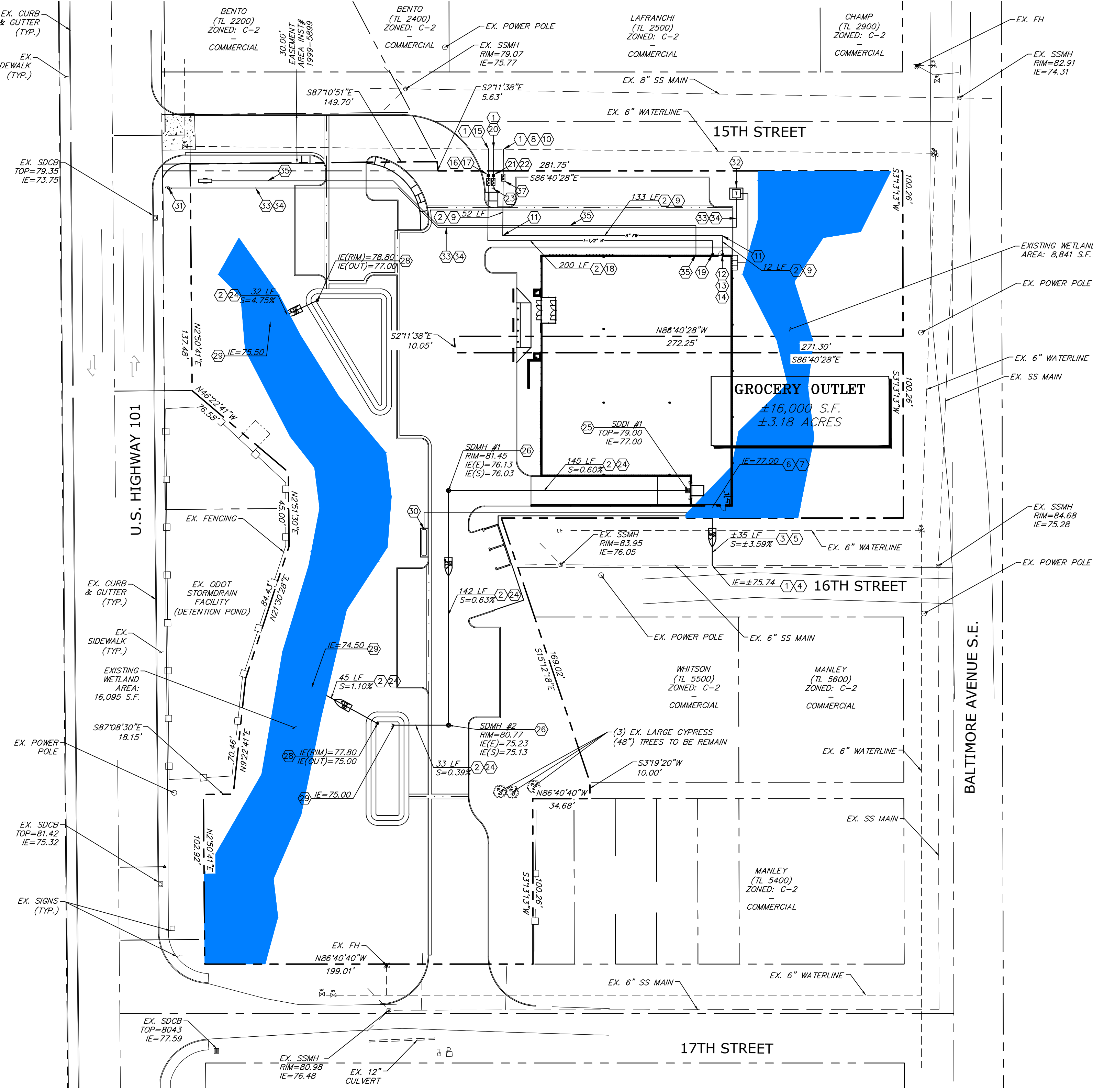
- REFERENCE "GENERAL NOTES" ON SHEET C6.1
- REFERENCE "ABBREVIATIONS" ON SHEET C6.1
- REFERENCE "LEGEND" ON SHEET C6.1

WATER NOTES:

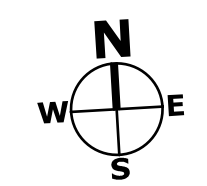
- THE CITY OF BANDON PUBLIC WORKS DEPARTMENT IS TO BE NOTIFIED 24 HOURS PRIOR TO COMMENCING WATER LINE CONSTRUCTION AND AGAIN IF DISCONTINUED FOR ANY REASON. CITY PUBLIC WORKS PHONE NUMBER IS: (541) 347-2437
- PUBLIC WATER SYSTEMS SHALL BE CONSTRUCTED TO CURRENT ODOT/APWA STANDARDS AND SPECIFICATION FOR PUBLIC WORKS CONSTRUCTION. IN ADDITION, ALL PUBLIC WATER SYSTEMS SHALL CONFORM TO THE PROVISIONS OF THE OREGON STATE HEALTH DIVISION (OSHD) PLAN APPROVAL ADMINISTRATIVE RULES, AND ALL MATERIALS SHALL MEET NATIONAL SANITATION FOUNDATION (NSF) STANDARD 61. ALL WORK SHALL BE SUBJECT TO INSPECTION FOR COMPLIANCE WITH THESE STANDARDS BY THE CITY OF BANDON AND THE PROJECT ENGINEER
- WATER MAINS SHALL BE DUCTILE IRON (DI) PIPE CONFORMING TO ANS/AWWA C151/A21.51, THICKNESS CLASS 52 FOR 4" UP TO 12", AND CLASS 50 FOR 12" AND LARGER, UNDER NORMAL LAYING CONDITIONS. SEVERE CONDITIONS MAY REQUIRE A HEAVIER CLASS. DUCTILE IRON PIPE SHALL BE STANDARD THICKNESS CEMENT LINED, CONFORMING TO ANS/AWWA C100/A21.4. FITTINGS SHALL BE CAST IRON CLASS 250 MINIMUM, CONFORMING TO ANS/AWWA C110/A21.10. JOINTS SHALL CONFORM TO AWWA C111 FOR PUSH ON RUBBER GASKET JOINTS AND SHALL BE "TYTON" OR MECHANICAL JOINT AS MANUFACTURED BY THE US PIPE AND FOUNDRY COMPANY OR APPROVED EQUAL UNLESS OTHERWISE NOTED IN THE DETAIL SPECIFICATIONS. THE PRESSURE RATING SHALL BE 250 PSI MINIMUM. RESTRAIN ALL VALVES, TEES, BENDS AND FITTINGS
- NEWLY CONSTRUCTED WATER LINES SHALL BE CHLORINATED AND BACTERIOLOGICAL TESTED IN ACCORDANCE WITH THE PROVISIONS OF OAR 333-61-050 (10) OREGON HEALTH DIVISION PRIOR TO PLACING THOSE LINES IN SERVICE, BUT AFTER PRESSURE TESTING. FLUSH LINES COMPLETELY AFTER DISINFECTION. THE DISINFECTION WATER IS TO BE TREATED AND/OR REMEDIATED TO DISSIPATE CHLORINE CONTENT. NO TREATED WATER IS TO ENTER RIPARIAN ZONES
- NEWLY CONSTRUCTED WATER LINES SHALL BE HYDROSTATICALLY TESTED BY THE CONTRACTOR, AT NO EXPENSE TO THE CITY, AT A PRESSURE EQUAL TO 150 PSI FOR 2 HOURS. INDIVIDUAL SECTIONS OF NEW LINES BETWEEN IN-LINE VALVES SHALL BE TESTED FOR 1 HOUR. TESTS SHALL BE IN ACCORDANCE WITH AWWA C-600. CONTRACTOR SHALL BE RESPONSIBLE FOR REPAIRING ALL LEAKS TO COMPLY WITH PRESSURE TEST, INCLUDING ALL VISIBLE LEAKS
- SAMPLE POINTS WILL BE INSTALLED BY THE CONTRACTOR AT LOCATIONS DIRECTED BY THE CITY, OR AS SHOWN ON THE PLANS. FIRE HYDRANTS WILL NOT BE USED AS SAMPLING POINTS FOR BACTERIOLOGICAL TESTS. FLUSH LINES COMPLETELY AFTER DISINFECTION AND PRIOR TO ANY SERVICE CONNECTION
- ANY CERTIFICATION OF CHLORINATION AND PRESSURE TESTS OF WATER LINES WILL BE APPROVED AFTER INSTALLATION OF MAINS AND WATER SERVICE COMPLETION
- THRUST BLOCKS & RESTRAINED MEGA LOCKS SHALL BE INSTALLED AT ALL BENDS, BLOWOFFS AND OTHER APPURTENANCES
- TRENCH BACKFILL SHALL CONFORM TO CURRENT APWA STANDARDS OR AS NOTED HEREIN, SEE GEOTECHNICAL DESIGN REPORT
- PIPE SEPARATION AND CROSSINGS SHALL BE IN ACCORDANCE WITH OAR 333-61-050 (9) AND CURRENT APWA STANDARDS
- ALL NEW WATER SERVICES TO BE STANDARD 1" IN ACCORDANCE WITH CITY OF BANDON STANDARDS WITH A 1" DIAMETER COPPER TUBE SIZE POLY LINE UNLESS OTHERWISE NOTED. ALL NEW SERVICES SHALL BE INSTALLED AT 90 DEGREES TO THE MAIN LINE. EXISTING SERVICES SHALL REMAIN IF IN GOOD CONDITION AND SHALL BE RE-CONNECTED TO NEW MAIN WITH AS LITTLE DOWNTIME AS POSSIBLE
- NEW INDIVIDUAL WATER SERVICES SHALL CONFORM TO APWA DETAILS INCLUDED HEREIN. NO NEW PUBLIC (CITY) WATER METERS SHALL BE INSTALLED UNTIL SUCH TIME THAT CITY SERVICE IS AVAILABLE AND ALL APPLICABLE FEES PAID
- INSTALL STANDARD FIRE HYDRANT ASSEMBLY PER CURRENT APWA STANDARDS, AS SHOWN ON FIRE HYDRANT DETAIL HEREIN. FIRE HYDRANT ASSEMBLIES TO BE REPLACED OR INSTALLED WITH THE PROJECT ARE SHOWN ON THE PLANS
- ALL PUBLIC WATER FACILITIES OUTSIDE RIGHT OF WAYS SHALL BE WITHIN EASEMENTS
- ALL FIRE HYDRANTS SHALL BE MUELLER CNETURION, DRY BARREL, FAST TYPE WITH 5-1/4" MAIN VALVE OPENING OR APPROVED EQUAL
- ALL FIRE HYDRANTS SHALL CONFORM TO AWWA STANDARD C502
- METERS TO BE INSTALLED BY CITY OF BANDON
- METER BOXES TO BE SET AT GRADE BY CONTRACTOR

SEWER NOTES:

- ALL SANITARY SEWER WORK SHALL BE IN CONFORMANCE WITH CITY OF BANDON ORDINANCE
- SANITARY SEWER PIPE SHALL BE AS NOTED ON PLANS OR AS APPROVED BY ENGINEER. STANDARD GRAVITY SANITARY SEWER PIPE SHALL BE PVC PIPE CONFORMING TO ASTM D 3034 SDR 35 STANDARDS.
- ALL GRAVITY SANITARY SEWER MAINLINES AND LATERALS SHALL BE AIR TESTED IN ACCORDANCE WITH STANDARD SPECIFICATIONS, UNIBELL B-06.85, AFTER COMPACTION OF BACKFILL.
- SANITARY SEWER LATERALS FROM THE BUILDING TO THE SEWER MAIN SHALL BE CONSTRUCTED IN ACCORDANCE WITH OREGON STATE DEPARTMENT OF COMMERCE, BUILDING CODES DIVISION, 1991 UNIFORM PLUMBING CODE AND ITS AMENDMENTS, EXCEPT FOR 8" AND LARGER PUBLIC SEWERS WHICH SHALL BE CONSTRUCTED IN ACCORDANCE WITH DEO STANDARDS FOR PUBLIC SEWERS AND TO THE LINES, GRADES AND DETAILS SHOWN ON THE PLANS. 4" AND 6" LATERALS SHALL BE PVC ASTM 3034. ALL LINES SHALL HAVE TONING WIRE INSTALLED IN THE TRENCH FOR FUTURE LOCATING.
- WHENEVER SEWER LATERALS CROSS WATER LINES WITH LESS THAN 18" VERTICAL CLEARANCE, THE SEWER LATERAL SHALL BE C900 PVC OR DUCTILE IRON PIPE 9" MINIMUM EACH SIDE OF WATER LINE.
- CONTRACTOR SHALL BE RESPONSIBLE FOR PROVIDING AND INSTALLING ALL APPURTENANCES AS NEEDED FOR CONNECTING NEW SEWER TO EXISTING SEWER AT NO ADDITIONAL COST TO THE OWNER.
- A PRE CONSTRUCTION MEETING IS REQUIRED PRIOR TO CONSTRUCTION BEGINNING WITH AT LEAST 48 HOURS NOTICE.
- ALL CONSTRUCTION IS SUBJECT TO INSPECTION BY THE CITY OF BANDON PUBLIC WORKS DEPARTMENT OR DESIGNER. THE CONTRACTOR SHALL NOTIFY THE DEPARTMENT AT LEAST 48 HOUR PRIOR TO BEGINNING.



UTILITY PLAN
SCALE: 1" = 40'-0"



1"=40'-0" GROCERY OUTLET BANDON, OR 20096 C4.1
2 DAYS BEFORE YOU DIG CALL USA TOLL FREE 1-800-227-2600

TECTONICS DESIGN GROUP
10451 Double R Boulevard, Reno, NV 89521
Tel: 775-824-9988 Fax: 775-824-9960
www.tectonicsdesigngroup.com

Grocery Outlet
Bandon, Oregon

837 Jefferson Blvd, West Sacramento, CA 95691

ENGINEERED BY: [Signature]

PROJECT/CIENT: # 22073
DATE: 08/22/22
SUBMITTAL RECORD: SUBMITTAL
SHEET TITLE: UTILITY PLAN
SHEET: C4.1

PRELIMINARY

DESIGNER: M.C.M.
DESIGNED: J.P.B./M.C.M.
CHECKED/STAMPED: MATT K. RASMUSSEN, P.E.

Copyright: All drawings herein are the property of Tectonics Design Group and may not be reproduced or used in any capacity without the written authorization of Tectonics Design Group.